
OSHER
LIFELONG
LEARNING
INSTITUTE

OLLI FALL 2016 CATALOG

Lectures and field trips for those age 50 and better.

University-level non-credit courses



Learning for the Love of Learning

The Osher Lifelong Learning Institute (OLLI) at Fresno State offers learning opportunities to those age 50 or better. No entrance requirements, tests, grades or papers – just learning for enjoyment, personal growth and intellectual stimulation with like-minded people. Come learn for the love of learning!

Membership Information

At Fresno State's OLLI, you choose how involved you wish to be, depending on your availability and interests.

General Sessions and Short Courses are open ONLY to OLLI members. Seating is limited for some events so be sure to return your registration as soon as possible. Non-members may attend Field Trips by paying the non-member registration fees for those individual trips (see details under Field Trip listings in this catalog).

Membership fees are non-refundable and non-transferable. Members who must cancel their Field Trips or Short Courses will be refunded only if their space can be filled.

You will receive a confirmation letter once we receive your registration and payment. We cannot hold space without a paid registration.

Parking

OLLI incurs a parking charge; however, the OLLI leadership has decided not to pass this cost on to you. Members may request a parking permit by checking the option on the registration form. If you request a permit, parking details will be mailed to you. We respectfully ask that you request a permit only if necessary. If there are multiple OLLI members in your household or social group, please consider carpooling to events. Your consideration maintains OLLI's ability to offer quality programs at an affordable price.

OLLI is not responsible for lost or stolen parking permits nor for parking citations received by those not in compliance with campus parking regulations.

Keep in mind that Fresno State's student population is growing and it may take a bit of time to find a parking spot. Allow yourself enough time to park and walk to the venue.

If you need a disability-related accommodation or wheelchair access information, please contact the OLLI office at 559.278.0008 or send us an email at osher@csufresno.edu. Requests should be made at least one week in advance of the event.



General Membership \$40 Per Person

- Admission to all scheduled General Sessions during the Fall 2016 semester.
- Opportunity to register for Short Courses and Field Trips as outlined on the schedule.
- Optional on-campus parking during all General Session events and Short Courses.
- Privileges to use and check out materials at the Henry Madden Library.
- OLLI activity announcements about Fresno State events via email.

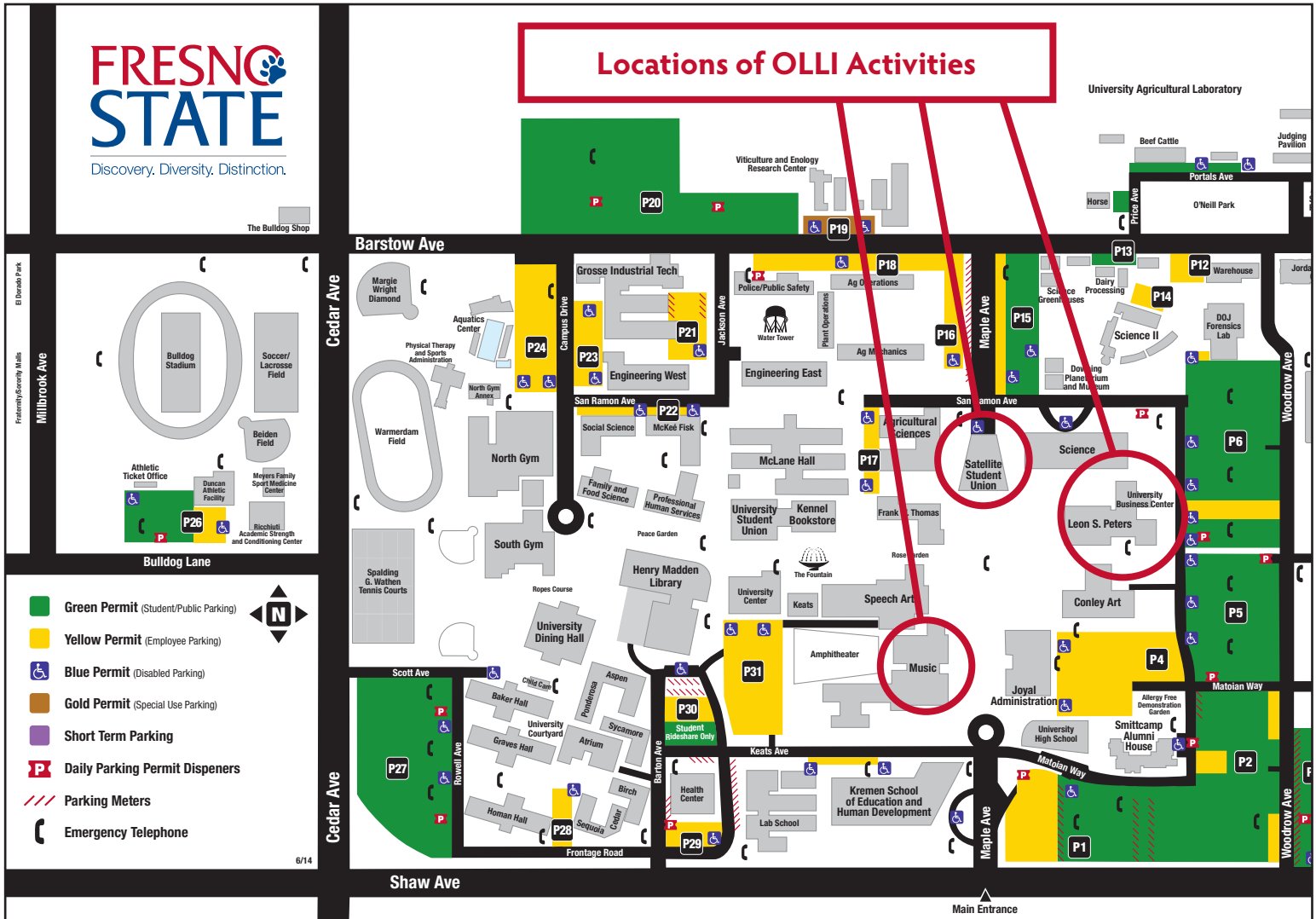
Short Courses Fee Varies

- Open only to OLLI members.
- A wide variety of interesting topics is offered.
- Registration is processed on a first-come, first-served basis.
- Short course are self-supporting. A minimum enrollment is required or courses may be cancelled.

Field Trips Fee Varies

- Open to members and non-members. Members get a lower price.
- Registration is processed on a first-come, first-served basis.
- Field trips are self-supporting. A minimum enrollment is required or trips may be cancelled.
- Consumption of alcoholic beverages is not permitted in vehicles operated or provided by OLLI.

Locations of OLLI Activities at Fresno State



Osher Lifelong Learning Institute

5245 N. Backer Avenue, M/S PB5 • Fresno, CA, 93740

559.278.0008 Email osher@csufresno.edu

www.FresnoState.edu/olli

Disabled Parking: Fresno State parking lots have clearly designated parking spaces for the disabled. A valid DMV placard or disabled license plate, as well as a **campus parking permit, is required to be displayed.**

The Osher Lifelong Learning Institute is not responsible for parking violations.

OLLI Advisory Board

Leticia Reyna Cano
Kay Davies
Lee Ann Jansen

Judy McDonald
Valerie Vuicich
Larry Zander

Scott D. Moore, Ph.D., Dean,
Continuing and Global Education
Jill Wagner, APR Executive Director

General Session Descriptions

SEPTEMBER

13

TUESDAY



3:00 - 4:30 PM Satellite Student Union

Why Laugh? Comedy Uncovered

Dr. Ed EmanuEl

Comedy! What makes us laugh? Why do we think certain things are funny and others are not? Enjoy a brief history of comedy, comic anecdotes from Dr. EmanuEl's life and a portion of his standup comedy routine that he once performed in the Bay Area. Dr. EmanuEl taught myriad topics during his theatre arts career at Fresno State and earned the highest award that can be conferred upon a professor in the CSU system: the Stanley T. Wang Family Award for Academic Excellence. Dr. EmanuEl is a noted writer and director who has shared his talents and passions around the nation and world.

OCTOBER

12

WEDNESDAY



3:00 - 4:30 PM Satellite Student Union

Virtual Reality is the Coolest Tool in a Psychologist's Toolbox

Dr. Lorin Lachs

There has been an explosion of interest in using virtual reality as a tool for psychological research. Come hear how virtual reality therapy techniques have been shown to be effective for people with physical and psychological disabilities and how they have the potential to radically change our understanding of human behavior. Learn about ongoing research projects at Fresno State that provide examples of how the new opportunities afforded by virtual reality can be used to study human perception in unique and novel ways.

OCTOBER

19

WEDNESDAY



3:00 - 4:30 PM Satellite Student Union

U.S.-Cuban Relations: The Next Chapter

Dr. Bill Skuban

International relations between the United States and Cuba have been, to say the least, tumultuous. The foreign policy of the United States often has clashed with an emerging Cuban nationalism after the island broke its colonial ties with Spain in 1898. Presidents Eisenhower and Kennedy quickly set the twin foreign policy objectives towards Cuba for the remainder of the twentieth century: diplomatic isolation and economic embargo. Within the past year, diplomatic relations between the two countries were formally reestablished with the opening of embassies, and a visit by President Obama who met with its president and Communist Party leader Raúl Castro, only the second such visit by a sitting U.S. president. Why did these historic events take place, and what do they portend for U.S.-Cuban relations?

OCTOBER

27

THURSDAY



1:00 - 2:30 PM Satellite Student Union

Our Hometown Air National Guard – the 144th Fighter Wing

Col. Reed Drake, 144th Fighter Wing Commander

At 45,000 feet and a 1000 miles an hour, probably sounds like the way you felt on a typical hectic work day. Join us to learn how it feels to be at the helm of a machine that does just that. You will learn about our hometown Air National Guard, its history, where it is today and the bright future it holds. Col. Reed Drake is the 144th Fighter Wing Commander who has more than 4500 hours in an F-15 and years flying as a United Airlines 747 co-pilot.



NOVEMBER

2

WEDNESDAY

3:00 - 4:30 PM Satellite Student Union

Alzheimer's Disease and ALS: Clues from the Environment and Answers from Biomedical Research

Dr. Joy Goto



Neurodegenerative diseases are influenced by age, genetics and the environment. Dr. Goto's research uses fruit flies and neuronal cultures as models to understand the molecular and chemical mechanisms of how these diseases are initiated and propagated in humans. She will explain how biomedical research advances our insights into these complex diseases and how her Fresno State laboratory and students are paving the way to finding answers.

DECEMBER

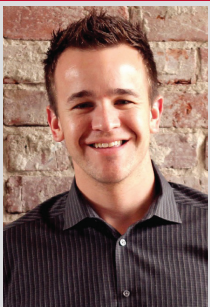
1

THURSDAY

1:30 - 3:00 PM Satellite Student Union

The Bitwise Movement: How Technology Can Fix America's Most Broken City

Jake Soberal



Jake Soberal is the CEO of Bitwise Industries (Bitwise), the mothership of technological education, collaboration and innovation in Fresno. Bitwise was founded in 2013 to move the region's technology industry forward through innovation, technological education, talent retention and job creation. The collective efforts of their first location (Bitwise Mural District) created one new technology job every ten days and generated over \$10 million in new revenue in its first year. Now a second location is online and Bitwise's success has poised it to propose an initiative to forever change the Fresno landscape. *Note: This is a repeat of the Summer 2016 session so that more members can hear this important message.*

OLLI Fall 2016

Short Course Descriptions

SEPTEMBER

1, 8 & 15

THURSDAYS

\$25

2:00 - 3:30 PM PB 191

Beginners Guide to Paraphysics

Aaron Drake

Paraphysics deals with naturally occurring phenomena that are “observed” or “experienced” outside of our normal five senses. It also includes the gathering of knowledge and data by other than our five senses. This course will explore the paranormal, paraphysics and parapsychology phenomena. You can ask about your own experiences and get feedback about how and perhaps why they occurred. We’ll also cover a meditation technique you can use to tap into this unknown energy on your own.

SEPTEMBER

6, 13, 20 & 27

TUESDAYS

\$35

10:00 - 11:30 AM Music Building 175

An Introduction to Reading Music

Dr. Anna Hamre

This four-session class is an introduction to the basics of reading music. This class will include the steps to deciphering rhythms, pitches, and key signatures, allowing singers to develop the ability to learn music by sight, not just sound. Dr. Hamre is the author of *The High-School/University Sight-Singer* (Masterworks Press), a music literacy method in use in every state plus the District of Columbia, Guam, British Columbia, Hong Kong and Indonesia.

SEPTEMBER

7, 14, 21 & 28

WEDNESDAYS

\$35

10:00 - 11:30 AM PB191

The Sacred Aztec Calendar Round

Francisco Alvarez

Join us as we explore the cosmology of the Aztec Calendar and its use in daily life. You will discover your Aztec Day Name and how to track the days on any calendar.

SEPTEMBER

9, 23 & 30

FRIDAYS

\$25

1:00 - 3:00 PM PB192

iPhone and iPad

DISCOVERe Staff

Explore the basics and beyond of your iPhone and iPad to learn features that will help you get the most from these powerful little computers. Bring your iPhone or iPad to the class for maximum benefit. These classes will provide meaningful, hands-on instruction so you’ll master your device before you know it.

FRESNO
STATE



SEPTEMBER
12, 19 & 26
OCTOBER
3, 10 & 17
MONDAYS

\$50

10:00 - 11:30 AM PB194

Poetry Writing

Sally Vogl

Develop the poet within you. Because your life is unique, only you can write poems based on your experiences and observations. In this class we'll read published poems, write and share our own poems in a safe and supportive group, and hear what in our work touches in others. We'll learn about tone, pacing, sense of place and taking risks. We'll help each other go deeper and make new discoveries. This class is open to both new and returning students.

SEPTEMBER
14, 21 & 28
OCTOBER
5
WEDNESDAYS

\$40

3:00 - 5:00 PM PB191

Rock & Roll in the 1970s

Dr. Matt Darling

Join us for an in-depth look at Rock & Roll in 1970s. Arguably the most creative decade in the history of recorded popular music, the 70s brought us the singer-songwriters, progressive rock, rap, heavy-metal and, of course, disco and punk. Artists like Santana, Carole King, Michael Jackson, Grandmaster Flash, Earth, Wind & Fire, Blondie, and Alice Cooper proved that rock & roll was no passing fad. It could be all at once vibrant, beautiful, shocking and provocative - a true reflection of America as we moved out of the tumultuous 60s.

SEPTEMBER
15, 22 & 29
OCTOBER
6
THURSDAYS

\$40

10:00 - 12:00 PM PB191

The Dark Mystery Films - Film Noir, Part I

Dr. Ed EmanuEl

Film Noir will review the powerful films of the anti-hero in cinema. We'll review and discuss such films as *The Killers* starring Burt Lancaster and Ava Gardner, *He Walked By Night* starring Richard Basehart and Scott Brady, *The Blue Dahlia* starring Alan Ladd and Veronica Lake and many more. Film Noir Part II will take up right where Part I ends. Part II is NOT contingent on taking Part I.

SEPTEMBER
20 & 27
OCTOBER
4 & 11
TUESDAYS

\$40

10:00 - 12:00 PM PB191

Comedy a la British TV Telly! The Best of British TV Comedy, Part I

Dr. Ed EmanuEl

In British TV Comedy Part I we will watch and discuss the best and most entertaining British comedy classics including *Faulty Towers*, *Yes Minister*, *Keeping Up Appearances*, *Black Adder*, *Thin Blue Line*, *Monte Python*, *Benny Hill* and many others. British TV Comedy Part II will take up right where Part I ends. Part II is NOT contingent on taking Part I.

SEPTEMBER
20 & 27

OCTOBER
4, 11, 18 & 25

NOVEMBER

1 & 8

TUESDAYS

\$70

2:00 - 3:30 PM PB194

Memoirs: Writing the Stories of Your Life

Linnea Alexander

This class is designed for both experienced and beginning writers as you write your personal biography. We will discuss various techniques to make your writing more powerful and to make the writing process more enjoyable. You will have the opportunity to revise, with feedback from the instructor as well as peers in the class.

OCTOBER

3, 10, 17 & 24

MONDAYS

\$35

2:30 - 4:00 PM PB191

World's Fairs and the Spectacle of Display

Susana Sosa

International World's Fairs emerged from the conjunction of the Industrial Revolution and modern mass display to showcase new technologies, commercial products, decorative and cultural arts. This course explores the history and spectacle of World's Fairs from the first Exhibition held in London in 1851 to the New York Fair of 1939. We will discuss how World's Fairs helped shaped national identity and promote notions of "modernity" through the visual spectacle of architecture and the arts. Participants will also be introduced to the Donald G. Larson World's Fair Collection at the Henry Madden Library.

OCTOBER

5, 12 & 19

WEDNESDAYS

\$25

10:30 - 12:00 PM PB191

Filming the Birth of the Twentieth Century

Paul Kaser

We'll review early twentieth century newsreels as well as popular feature films and series, including *Downton Abbey*, *The Age of Innocence*, *Cavalcade*, *A Farewell to Arms*, and *All Quiet on the Western Front*, *The Grand Illusion*, and *Lawrence of Arabia*. We'll examine how films have portrayed the way our predecessors lived (and died) during the world-wrenching opening decades of the last century, from turn-of-the-century optimism through the disillusionment of the "War to End All Wars."

OCTOBER

6, 13, 20 & 27

THURSDAYS

\$35

3:00 - 4:30 PM PB191

Philosophy, Democracy and Utopia

Dr. Andy Fiala

This course will focus on democratic hopes, dreams and nightmares. While keeping an eye on the Presidential election, Professor Andrew Fiala will consider the pros and cons of democracy. Participants will gain insight into the history of political theory and will have an opportunity to think critically about election year politics. Dr. Andrew Fiala is Director of the Ethics Center at Fresno State and Chair of the Philosophy Department. He also writes a weekly column on ethics, religion and politics for the Fresno Bee.

OCTOBER
13, 20 & 27

NOVEMBER

3

\$40

THURSDAYS

10:00 AM - 12:00 PM PB191

The Dark Mystery Films - Film Noir, Part II

Dr. Ed EmanuEl

Film Noir will continue a review and discussion of powerful films of the anti-hero in cinema. Film Noir Part II will take up right where Part I ended. Part II is NOT contingent on taking Part I.

OCTOBER
18 & 25

NOVEMBER

1 & 8

\$40

TUESDAYS

10:00 AM - 12:00 PM PB191

Comedy a la British TV Telly! The Best of British TV Comedy Part II

Dr. Ed EmanuEl

In British TV Comedy Part II we will watch and discuss the best and most entertaining British comedy classics including *Faulty Towers*, *Yes Minister*, *Keeping Up Appearances*, *Black Adder*, *Thin Blue Line*, *Monte Python*, *Benny Hill* and many others. British TV Comedy Part II will take up right where Part I ended. Part II is NOT contingent on taking Part I.

OCTOBER
21

FRIDAY

\$5

1:00 - 3:00 PM PB 192

Android: Basics

Explore the basics of your Android phone to learn features that will help you get the most from this powerful little computer. Bring your Android device to the class for maximum benefit.

NOVEMBER
3 & 10

THURSDAYS

\$20

2:00 - 4:00 PM PB 191

The Fascinating and Puzzling World of Mughal Empire Paintings

Hazel Antaramian-Hofman

A seventeenth-century Mughal emperor shoots arrows at an emaciated old man, while putty-like angels hand him more arrows. This is a brief description of a complex iconographic painting of watercolor, gold and ink on paper entitled *Emperor Jahangir Triumphant over Poverty*. In this class we will look at illustrations of Mughal paintings and decorative art objects of an unusual artistic nature and formulate our own interpretations of some of the scenes shown in class. Mughal painting is a particular style of South Asian painting which emerged from Persian miniature painting, with Indian Hindu, Jain and Buddhist influences, and developed largely in the court of the Mughal Empire (16th - 19th centuries).

NOVEMBER

7, 14, 21 & 28

MONDAYS

\$35

10:00 - 11:30 AM PB191

History of Numbers

Elena Duran-Diestelkamp

Where do numbers come from? Who invented zero? These are just two of the many questions that will be answered in this course. Take a fascinating journey about numbers starting with the earliest calculating machine - namely the hand - from the beginning of humankind through ancient civilization to modern times. We will explore the development of numbers, numbers systems (e.g. Mayan, Egyptian, Chinese) and base numbers (e.g. decimal, binary). We will also do some fun hands-on activities.

NOVEMBER

7, 14 & 21

MONDAYS

\$25

2:00 - 3:30 PM PB191

The Story of Water in California – Past, Present and Future

Ben Ewell

Join us to learn the fascinating and true story of the relentless pursuit of efforts to control the use of water set against the competing interests of agriculture, urban and environment. The story is colorful, contentious and politically driven featuring heroes and villains, successes and failures and greed. Fresno attorney Ben Ewell has been involved in water law and business for decades and is owner and president of Water Acquisition Transfer and Exchange Resources as well as chairman of the Ewell Group of Companies with ownership interests in residential and commercial development, farming, marina operations, regulatory compliance consulting and mitigation projects.

NOVEMBER

9, 16 & 30

WEDNESDAYS

\$25

10:00 - 11:30 AM PB191

Be a Dream Catcher

Jill Wagner

Dreams don't just live in your imagination. In this course, you learn that it's never too late to pursue your deepest-held dreams and translate them into goals. We'll do some hands-on activities and create a game plan so that you can move closer to capturing your fondest dreams. Please bring a notebook or journal and a pen.

NOVEMBER

9, 16, 23 & 30

WEDNESDAYS

\$35

2:00 - 3:30 PM PB191

Washington, D.C. - History of an Historic City

Dr. Allen Carden

Washington, D.C. - our nation's capital - is one of the very few cities in the world created especially to be the seat of a national government. It has grown to be one of the most powerful and important cities in the world. As the seat of American government, the city has hosted innumerable historic events and been at least a temporary home to many of the country's most influential minds. This course will examine the origins and history of the city - not just the politics, but also the physical development of the city including its government buildings and monuments, its demographic changes, Washington's historic cultural and social scene and the expansion of the Capitol Area to nearly 4 million residents today.

NOVEMBER
15, 22 & 29

DECEMBER

6

TUESDAYS

\$35

10:00 - 11:30 PM PB191

Introduction to Asian Religious Traditions

Dr. Ann Berliner

This course will examine selections from the primary text of all four major religious traditions of Asia and compare similarities and differences. We'll explore Hinduism, Buddhism, Taoism and Confucianism. The religions share some similarities and origins but can be quite divergent. Dr. Ann Berliner, Professor Emerita, taught religion and philosophy in the philosophy department of Fresno State for more than 30 years. She has traveled and studied extensively throughout Asia, primarily in India, and returns almost yearly for further study.

NOVEMBER
15, 22 & 29

DECEMBER

6

TUESDAYS

\$35

2:00 - 3:30 PM PB191

I Hear a Symphony: The Story of the Symphony Orchestra and Its Instruments

Brad Hufft

You'll learn to appreciate music more through this overview of the development of the orchestra, beginning with the string orchestras of the Renaissance and Baroque periods and continuing with the evolution into the orchestra of today and all of its instruments. Weekly topics include: "In the Beginning There was the Violin"; "The Classical Orchestra of Haydn, Mozart and Beethoven"; "Looking Forward and Looking Backward, Orchestration and Historical Performances in the Romantic Era"; and "Now What? Can the Orchestra Survive?"

NOVEMBER

18

FRIDAY

\$5

1:00 - 3:00 PM PB 192

Facebook

There are many social channels through which you can connect with friends and families. Come learn the best features of Facebook and build your confidence. If you have a handheld device (smart phone, tablet, iPad) bring it along for maximum benefit.

DECEMBER

2

FRIDAY

\$5

1:00 - 3:00 PM PB 192

Best Music Applications: Pandora, Spotify and Yesterday USA

DISCOVERe Staff

Do you like listening to music but hate paying for it? We do too! Join us in discovering ways to listen to the music you like and discover "Yesterday USA," a great internet radio application that broadcasts "old-time radio shows" all day, every day. Harken back to yesteryear's entertainment with the help of today's technology.

DECEMBER

9

FRIDAY

\$5

1:00 - 3:00 PM PB 192

iCloud vs Google Drive

DISCOVERe Staff

Have you ever heard of the cloud? What is the cloud and where are your documents? Join us in the everlasting search for the “virtual” cloud and how you can benefit from its features, storage and easy access to help you save documents, photos and any kind of file on your computer.

Book Club

10:30 - 12:00 PM PB 194

Kay Davies

\$10

SEPTEMBER

9

OCTOBER

7

NOVEMBER

18

DECEMBER

9

FRIDAYS

Friday, September 9

No Ordinary Time: Franklin and Eleanor Roosevelt: The Home Front in WWII

by Doris Kearns Goodwin

The author weaves together a number of story lines - Eleanor and Franklin's marriage and partnership, Eleanor as a First Lady, and FDR's White House and its impact on America as well as on the world at war.

Friday, October 7

A Spy Among Friends: Kim Philby and the Great Betrayal

by Ben Macintyre

A story about the greatest spy in history who rose to head Britain's counterintelligence effort against the Soviet Union during the height of the Cold War while secretly working for the enemy. He betrayed not only his country but his best friend and fellow officer in M16.

Friday, November 18

Dreamland: The True Tale of American's Opiate Epidemic

by Sam Quinones

The rise of OxyContin addiction and subsequent heroin use has been much in the news as we try to make sense of what is happening in suburban and small town America. The book takes a multifaceted approach to the subject. Dreamland is a revelatory account of the corrosive threat facing American and its heartland.

Friday, December 9

Immortal Irishman: The Irish Revolutionary Who Became an American Hero

by Timothy Egan

The Irish American story with all its twists and triumphs, is told through the improbable life of one man. A dashing young orator during the Great Famine of the 1840s in which a million of his Irish countrymen died, Thomas Meagher led a failed uprising against British rule for which he was banished to a Tasmanian prison colony. He escaped and six months later was heralded in the streets of New York - the revolutionary hero, back from the dead at the dawn of the great Irish immigration to America.

Field Trips

SEPTEMBER

16

FRIDAY

11:00 AM - 1:00 PM

Tomatoes Night Out at Whole Foods

Members - \$25 Non Members - \$30

Price includes admission.

Maximum Capacity: 20

Last Day to Register: September 9

Rustic Heirloom Tomato Ciabatta
Slow Simmered Summer Tomato Soup
with Crème Fraiche
Zucchini Tomato Salad
Tomato Spice Cake

SEPTEMBER

22 & 23

THURSDAY & FRIDAY

Shinzen Gardens Lecture and Tour

Members - \$20 Non Members - \$25

Price includes the lecture and visit. The park charges a \$5 parking fee (\$3 for cars containing at least one senior) that those attending must pay.

Maximum Capacity: 30

Last Day to Register: September 9

Thursday, September 22, 2:00 - 3:30 PM

Lecture in PB191

For centuries, Japanese gardens have been cultural and historic landscapes and havens of beauty and tranquility in Japan. This class is an introduction to the cultural history and aesthetics of the Japanese garden with a special focus on the art of bonsai as exemplified by the Golden State Bonsai Federation's Clark Bonsai Collection at Shinzen Japanese Garden at Woodward Park. Linda Jacobsen will provide an overview of the history, symbolism and aesthetics of the Japanese Garden, and Bob Hilvers, the curator of the Bonsai Collection, will describe the marriage of horticulture and art that is bonsai, using examples from the Collection.

Friday, September 23, 9:00 - 10:30 AM

Visit to the Gardens at Woodward Park

The visit features a tour conducted by Roger and Karen Tsuruda, stellar Shinzen docents and volunteers. This is a walking tour through paved, wheelchair and walker-accessible pathways at a leisurely pace which will take about 40-45 minutes. Part two of the field trip will be in the bonsai garden. Bob Hilvers will share additional information about the care of the bonsai and the collection and answer questions. This will be followed by a walking tour of the bonsai currently on display. Enjoy the garden at leisure after the tour.

SEPTEMBER

23

FRIDAY

11:00 AM - 1:00 PM

Harvest Favorites at Whole Foods

Members - \$25 Non Members - \$30

Price includes admission.

Maximum Capacity: 20

Last Day to Register: September 16

Grilled Grape and Rosemary Chutney
with Toasted Crostini
Chicken with Roasted Figs, Olives
and Brown Basmati Rice
Walnut Macaron Pie with Harvest Fruit

OCTOBER 7
FRIDAY

6:30 AM - 8:00 PM
San Francisco Fleet Week

Members - \$50 Non Members - \$60
Price includes transportation only.

Maximum Capacity: 48 Last Day to Register: September 28

Taking place every October on the Marina Green, San Francisco's Fleet Week air show, parade of ships and many community events have become a significant and integral part of the city's local culture and economy. Friday events include a Parade of Ships and an Air Show that you can view from the Marina Green area, and from nearly every bayside location. The bus will drop you near the festivities and you are on your own to tour ships, watch planes and enjoy San Francisco and Fleet Week. Tickets to be seated for the air show can be purchased on this link: <http://fleetweeksf.org/tickets/>

OCTOBER 14 & 16
FRIDAY & SUNDAY

Good Company Players Theatre Tour and Camelot Show

Friday, October 14 **Sunday, October 16**
11:00 AM - 1:00 PM **1:00 - 4:00 PM**

Tour Show

Members - \$60 Non Members - \$65
Price includes admission, brunch and coffee on show day.

Maximum Capacity: 25 Last Day to Register: September 29

Enjoy a very special behind-the-scenes tour of the Good Company Players operation. Good Company Players' main focus is to provide professional-level training to local performers of all ages while also providing the community with challenging and entertaining exposure to theatre. You'll learn about their history, progress and future, visit some of their facilities, and hear from the local experts who make musicals and theatre performances come to life. The tour features walking in the Tower District. Then you will attend a performance of the musical *Camelot* on Sunday, Oct. 16.

OCTOBER 21
FRIDAY

11:00 AM - 1:00 PM
Cooking with Squash at Whole Foods

Members - \$25 Non Members - \$30
Price includes admission.

Maximum Capacity: 20
Last Day to Register: October 14

- Fall Squash Bruschetta
- Roasted Squash Salad with Champagne Vinaigrette
- Curried Butternut Squash Soup with Toasted Pecans
- Classic Pumpkin Bread

OCTOBER 26
WEDNESDAY

2:00 - 3:00 PM
Fresno State Winery

Members - \$10 Non Members - \$20
Price includes admission and a wine glass.

Maximum Capacity: 25
Last Day to Register: October 19

The Fresno State Winery and its student winemakers have achieved continuous recognition for producing quality wines. Each year, the winery is represented at both national and international wine competitions, consistently receiving numerous gold and silver medals, including "Best of Class." These awards, in addition to the 100% graduate employment rate, have brought unparalleled acclaim to Fresno State and the San Joaquin Valley. Come tour the winery and sample some old favorites and new varieties.

OCTOBER
28

FRIDAY

11:00 AM - 1:00 PM
Fruits of Fall at Whole Foods

Members - \$25 Non Members - \$30

Price includes admission.

Maximum Capacity: 20

Last Day to Register: October 21

Persimmon and Goat Cheese with
Honey Drizzle
Pork, Fennel and Apple Roast with Quinoa
French Pear Clafouti

NOVEMBER

4

FRIDAY

11:00 AM - 1:00 PM
Savvy Thanksgiving Sides at Whole Foods

Members - \$25 Non Members - \$30

Price includes admission.

Maximum Capacity: 20

Last Day to Register: October 28

Wild Rice and Sausage Stuffing
Cranberry and Pomegranate Jelly
Sage and Maple Roasted Squash
Pumpkin Molasses Custard with
Pecan Streusel and Vanilla Bean
Whipped Cream

NOVEMBER

10

THURSDAY

9:00 - 11:00 AM
Air National Guard Tour

Members - \$10 Non Members - \$20

Price includes admission. Ample parking at the base.

Maximum Capacity: 40

Last Day to Register: October 28

Come enjoy a two-hour walking tour of the 144th Fighter Wing, Fresno Air National Guard Base. This tour provides an up-close look at base operations. This is a walking tour with very little opportunity for sitting.

DECEMBER

2

FRIDAY

11:00 AM - 1:00 PM
Holiday Appetizers at Whole Foods

Members - \$25 Non Members - \$30

Price includes admission.

Maximum Capacity: 20

Last Day to Register: November 23

Wild Mushroom Toasts
Smoked Salmon Canapes
Pastry Wrapped Brie with
Caramelized Onions
Lime Chicken Skewers

SEPTEMBER

MONDAY	TUESDAY	WEDNESDAY	THURSDAY	FRIDAY
			2 PM Beginners Guide to Paraphysics 1	2
5	10 AM Intro to Reading Music 6	10 AM Sacred Aztec Calendar 7	2 PM Beginners Guide to Paraphysics 8	10:30 AM Book Club 1 PM iPhone and iPad 9
10 AM Poetry Writing 12	10 AM Intro to Reading Music 3 PM General Session Comedy Uncovered 13	10 AM Sacred Aztec Calendar 3 PM 70s Rock & Roll 14	10 AM Film Noir Part I 2 PM Beginners Guide to Paraphysics 15	11 AM Tomatoes Cooking Class 16
10 AM Poetry Writing 19	10 AM Intro to Reading Music 10 AM British TV Comedy Part I 2 PM Memoir Writing 20	10 AM Sacred Aztec Calendar 3 PM 70s Rock & Roll 21	10 AM Film Noir Part I 2 PM Shinzen Gardens Lecture 22	9 AM Shinzen Gardens Tour 11 AM Harvest Cooking Class 1 PM iPhone and iPad 23
10 AM Poetry Writing 26	10 AM Intro to Reading Music 10 AM British TV Comedy Part I 2 PM Memoir Writing 27	10 AM Sacred Aztec Calendar 3 PM 70s Rock & Roll 28	10 AM Film Noir Part I 29	1 PM iPhone and iPad 30

OCTOBER

MONDAY	TUESDAY	WEDNESDAY	THURSDAY	FRIDAY
10 AM Poetry Writing 2:30 PM World's Fairs 3	10 AM British TV Comedy Part I 2 PM Memoir Writing 4	10:30 AM Filming the 20 th Century 3 PM 70s Rock & Roll 5	10 AM Film Noir Part I 3 PM Philosophy, Democracy, Utopia 6	6:30 AM Fleet Week San Francisco 10:30 AM Book Club 7
10 AM Poetry Writing 2:30 PM World's Fairs 10	10 AM British TV Comedy Part I 2 PM Memoir Writing 11	10:30 AM Filming the 20 th Century 3 PM General Session Virtual Reality 12	10 AM Film Noir Part II 3 PM Philosophy, Democracy, Utopia 13	11 AM Good Company Players Tour Oct. 16, Sunday 1 PM Good Company Players Show 14
10 AM Poetry Writing 2:30 PM World's Fairs 17	10 AM British TV Comedy Part II 2 PM Memoir Writing 18	10:30 AM Filming the 20 th Century 3 PM General Session US-Cuba Relations 19	10 AM Film Noir Part II 3 PM Philosophy, Democracy, Utopia 20	11 AM Squash Cooking Class 1 PM Android Basics 21
2:30 PM World's Fairs 24	10 AM British TV Comedy Part II 2 PM Memoir Writing 25	2 PM Fresno State Winery Field Trip 26	10 AM Film Noir Part II 1 PM General Session 144th Fighter Wing 3 PM Philosophy, Democracy, Utopia 27	11 AM Fall Fruits Cooking Class 28
31				

NOVEMBER

MONDAY	TUESDAY	WEDNESDAY	THURSDAY	FRIDAY
	1 10 AM British TV Comedy Part II 2 PM Memoir Writing	2 3 PM General Session Alzheimer's and ALS Research	3 10 AM Film Noir, Part II 2 PM Mughal Empire Paintings	4 11 AM Thanksgiving Sides Cooking Class
7 10 AM History of Numbers 2 PM Story of Water	8 10 AM British TV Comedy Part II 2 PM Memoir Writing	9 10 AM Be a Dream Catcher 2 PM Washington DC History	10 9 AM Air National Guard Tour 2 PM Mughal Empire Paintings	11
14 10 AM History of Numbers 2 PM Story of Water	15 10 AM Asian Religions 2 PM I Hear a Symphony	16 10 AM Be a Dream Catcher 2 PM Washington DC History	17	18 10:30 AM Book Club 1 PM Facebook
21 10 AM History of Numbers 2 PM Story of Water	22 10 AM Asian Religions 2 PM I Hear a Symphony	23 2 PM Washington DC History	24	25
28 10 AM History of Numbers	29 10 AM Asian Religions 2 PM I Hear a Symphony	30 10 AM Be a Dream Catcher 2 PM Washington DC History		

DECEMBER

MONDAY	TUESDAY	WEDNESDAY	THURSDAY	FRIDAY
			1 1:30 PM General Session Bitwise Movement - Fixing Our City	2 11 AM Holiday Appetizers Cooking Class 1 PM Free Online Music
5	6 10 AM Asian Religions 2 PM I Hear a Symphony	7	8	9 10:30 AM Book Club 1 PM Cloud Drives
12	13	14	15	16
19	20	21	22	23
26	27	28	29	30



BOLD GIVES BACK.

Alina Bhatti, a freshman majoring in Biology, participated in the First Year Experience program, which cultivates critical thinking skills for academic success and beyond.

When a university and a community come together to move a region forward, that's bold.

Fresno State's calling is to help break through challenges that stand between the Valley you know and the Valley we must become to thrive, putting great minds to work and partnering every step of the way.

From every corner of campus, there's a commitment to graduate more problem-solvers, more innovators and more critical thinkers who see the potential of our Valley. It's not surprising then, that 80 percent of Fresno State graduates choose to stay here to build regional vitality.

**So join us and lead like only we can together.
Give where bold begins.**

FRESNO STATE

Discovery. Diversity. Distinction.

www.FresnoState.edu/giving

**RELEASE OF LIABILITY, PROMISE NOT TO SUE, ASSUMPTION OF RISK
AND AGREEMENT TO PAY CLAIMS**

Activity: Osher Lifelong Learning Institute – Fall 2016 Field Trips

Activity Date(s), Time(s) and Location(s): See reverse side for all initialed activities attending

In consideration of being allowed to participate in these Activities, on behalf of myself and my next of kin, heirs and representatives, I **release from all liability and promise not to sue** the State of California, the Trustees of The California State University, California State University, Fresno and their employees, officers, directors, volunteers and agents (collectively "University") from any and all claims, **including claims of the University's, negligence**, resulting in any physical or psychological injury (including paralysis and death), illness, damages, or economic or emotional loss I may suffer because of my participation in these Activities, including travel to, from and during the Activities.

I am voluntarily participating in these Activities. I am aware of the risks associated with traveling to/from and participating in these Activities, which include but are not limited to physical or psychological injury, pain, suffering, illness, disfigurement, temporary or permanent disability (including paralysis), economic or emotional loss, and/or death. I understand that these injuries or outcome may arise from my own or other's actions, inaction, or negligence; conditions related to travel; or the condition of the Activities locations. **Nonetheless, I assume all related risks, both known or unknown to me, of my participation in these Activities, including travel to, from and during the Activities.**

I agree to **hold the University harmless** from any and all claims, including attorney's fees or damage to my personal property, which may occur as a result of my participation in these Activities, including travel to, from and during the Activities. If the University incurs any of these types of expenses, I agree to reimburse the University. If I need medical treatment, I agree to be financially responsible for any costs incurred as a result of such treatment. I am aware and understand that I should carry my own health insurance.

I am 18 years or older. **I understand the legal consequences of signing this document, including (a) releasing the University from all liability, (b) promising not to sue the University, (c) and assuming all risks of participating in these Activities, including travel to, from and during these Activities.**

I understand that this document is written to be as broad and inclusive as legally permitted by the State of California. I agree that if any portion is held invalid or unenforceable, I will continue to be bound by the remaining terms.

I have read this document, and I am signing it freely. No other representations concerning the legal effect of this document have been made to me.

Participant Name (*Print*): _____

Participant Signature: _____ Date: _____

PLEASE SEE REVERSE FOR LIST OF ACTIVITIES

I have initialed by each of the following field trips listed below and confirm that I have reviewed the detailed information contained in the OLLI Fall 2016 catalog for each of the activities and events. As such, I understand the unique risks associated with each event.

FIELD TRIPS

_____ **Tomatoes Night Out Cooking Class, Whole Foods**

September 16, 11 AM – 1 PM

_____ **Shinzen Gardens Lecture and Tour**

September 22, 2 - 3:30 PM

September 23, 9 - 10:30 AM

_____ **Harvest Favorites Cooking Class, Whole Foods**

September 23, 11 AM - 1 PM

_____ **Fleet Week (Bus Trip), San Francisco, CA**

October 7, 6:30 AM - 8 PM

_____ **Good Company Players Tour & Show**

October 14, 11 AM - 1 PM

October 16, 1 - 4 PM

_____ **Cooking with Squash Cooking Class, Whole Foods**

October 21, 11 AM - 1 PM

_____ **Fresno State Winery Tour and Tasting**

October 26, 2 - 3 PM

_____ **Fruits of Fall Cooking Class, Whole Foods**

October 28, 11 AM - 1 PM

_____ **Savvy Thanksgiving Sides Cooking Class, Whole Foods**

November 4, 11 AM - 1 PM

_____ **Air National Guard Tour, 144th Fighter Wing**

November 10, 9 - 11 AM

_____ **Holiday Appetizers Cooking Class, Whole Foods**

December 2, 11 AM - 1 PM

Participant Name (*Print*): _____

Participant Signature: _____ Date: _____

Osher Lifelong Learning Institute **Registration – Fall 2016**

Member(s) Name(s) _____

Mailing Address/City/Zip _____

Mode of contact: (in case of changes or cancellations)

Email address _____ Phone _____

How did you hear about the Fresno State OLLI?

Previously a member Heard from a friend Newspaper Brochure Other

Your age group 50-60 61-70 71-80 80+

MEMBERSHIP FEE

General Membership* \$40 per person (non-refundable) \$ _____

SHORT COURSES – Available only with a paid membership

- Beginners Guide to Paraphysics (three Thursdays) x\$25/person \$ _____
- Introduction to Reading Music (four Tuesdays) x\$35/person \$ _____
- Sacred Aztec Calendar Round (four Wednesdays) x\$35/person \$ _____
- **iPhone and iPad (three Fridays) x\$25/person \$ _____
- Poetry Writing (six Mondays) x\$50/person \$ _____
- Rock & Roll in the 70s (four Wednesdays) x\$40/person \$ _____
- The Dark Mystery Films, Film Noir Part I (four Thursdays) x\$40/person \$ _____
- British TV Comedy Part I (four Tuesdays) x\$40/person \$ _____
- Memoir Writing (eight Tuesdays) x\$70/person \$ _____
- World's Fairs and the Spectacle of Display (four Mondays) x\$35/person \$ _____
- Filming the Birth of the 20th Century (three Wednesdays) x\$25/person \$ _____
- Philosophy, Democracy and Utopia (four Thursdays) x\$35/person \$ _____
- British TV Comedy Part II (four Tuesdays) x\$40/person \$ _____
- The Dark Mystery Films, Film Noir Part II (four Thursdays) x\$40/person \$ _____
- **Android Basics (one Friday) x\$5/person \$ _____
- Mughal Empire Paintings (two Thursdays) x\$20/person \$ _____
- History of Numbers (four Mondays) x\$35/person \$ _____
- The Story of Water in California (three Mondays) x\$25/person \$ _____
- Be A Dream Catcher (three Wednesdays) x\$25/person \$ _____
- I Hear a Symphony (four Tuesdays) x\$35/person \$ _____
- Introduction to Asian Religious Traditions (four Tuesdays) x\$35/person \$ _____
- **How to Use Facebook (one Friday) x\$5/person \$ _____
- **Best Free Online Music Applications (one Friday) x\$5/person \$ _____
- **iCloud vs. Google Drive (one Friday) x\$5/person \$ _____
- Book Club with Kay Davies (four Fridays) x\$10/person \$ _____

** = This special pricing is possible through partnership with the campus DISCOVERe program

FIELD TRIPS – Available to members and non-members

	Member	Non-Member	
Tomatoes Night Out Cooking Class – Whole Foods	\$25	\$30	\$ _____
Shinzen Gardens Lecture and Tour	\$20	\$25	\$ _____
Harvest Favorites Cooking Class – Whole Foods	\$25	\$30	\$ _____

ALL FIELD TRIPS sign both sides of the Liability Form in this catalog and send with registration

PLEASE SEE REVERSE FOR MORE

FIELD TRIPS CONTINUED – Available to members and non-members

	Member	Non-Member	
San Francisco Fleet Week (bus trip)	\$50	\$60	\$_____
Good Company Players Tour & Show	\$60	\$65	\$_____
Cooking with Squash Cooking Class – Whole Foods	\$25	\$30	\$_____
Fresno State Winery Tour & Tasting	\$10	\$20	\$_____
Fruits of Fall Cooking Class – Whole Foods	\$25	\$30	\$_____
Savvy Thanksgiving Sides Cooking Class – Whole Foods	\$25	\$30	\$_____
Air National Guard Tour	\$10	\$20	\$_____
Holiday Appetizers Cooking Class – Whole Foods	\$25	\$30	\$_____

TOTAL AMOUNT ENCLOSED

\$	
-----------	--

PAYMENT: We accept checks or money orders made payable to **FRESNO STATE**.

ALL FIELD TRIPS sign both sides of the Liability Form in this catalog and send with registration

**If you need a disability-related accommodation of wheelchair access information, please contact the OLLI office at 559.278.0008 or send an email to osher@csufresno.edu. Requests should be made at least one week in advance.*

Photograph and media release (and Guardian if Participant is a minor) grants permission to Fresno State and the Osher Institute to use Participant’s image appearing in any photographs, videotapes, motion picture or any other media for any of Fresno State’s advertising or promotional purposes whatsoever, in perpetuity, throughout the world. If you do not agree please notify OLLI in writing prior to your participation in any OLLI event.

Please return this form with payment to:

Fresno State OLLI
 5245 N. Backer Avenue, M/S PB5
 Fresno, CA 93740
 559.278.0008

Any additional gift for the OLLI program at Fresno State *(optional)*
 Checks for gifts must be made in a separate check payable to Fresno State Foundation.

Thank you!

\$_____



Giving to Fresno State OLLI

Your Fresno State OLLI is dedicated to providing excellent educational programs to adults age 50 and over who are interested in learning for the love of learning.

Thanks to your support, our program is growing. We'd like to:

- Expand the number of program offerings
- Increase access to all programs by exploring additional locations and class times
- Deliver high-quality, relevant programs

We are an independent program partially underwritten by interest earnings on the initial endowment from the Bernard Osher Foundation and through class registration fees.

With your support, we can continue to grow and engage those in the valley age 50 and better who have a quest for learning among peers.

Thank you for your support!

Checks for gifts must be made payable to the
Fresno State Foundation

Fresno State OLLI
5245 N. Backer Avenue, M/S PB5
Fresno, CA 93740

559.278.0008



Continuing and Global Education

California State University, Fresno
5245 N. Backer Avenue, M/S PB5
Fresno, CA 93740

CHANGE SERVICE REQUESTED

Non-Profit
Organization
U.S. Postage
PAID
Fresno, CA
Permit No. 262